

FLEET Condition Analysis



FLEET STAT

**MPD, FEMS, DPW, DDOT, DCRA, DGS,
DOEE, DOH, DPR, DYRS, CFSA**

Ambulances, Fire Trucks, Pumper Trucks, Rescue Vehicles, Marked Vehicles,
Unmarked Vehicles, K-9 units, Command Busses, Pick-Up Trucks, Dump
Trucks, Off Road Construction, Medium/Heavy Trucks, Tow Trucks

Dated 9-15-2021

GOVERNMENT OF THE DISTRICT OF COLUMBIA
CARSS



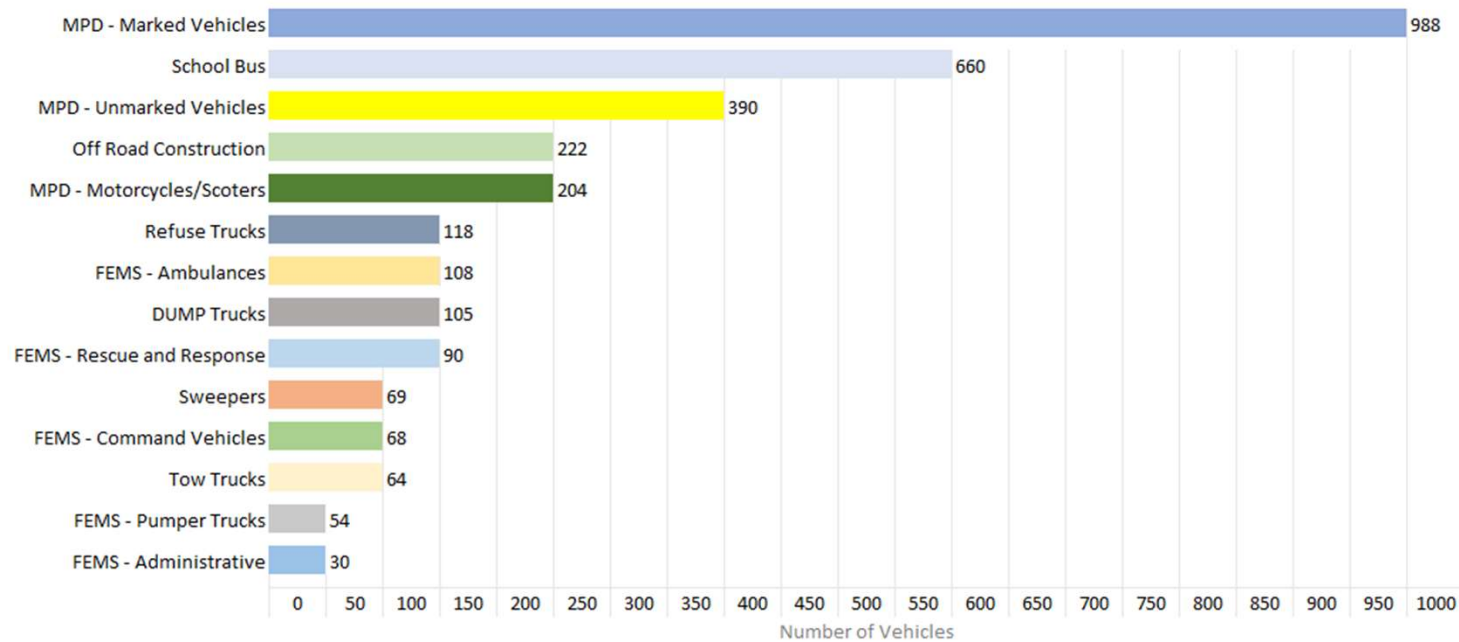
Agenda



1. What Types of Vehicles are in the Districts Fleet?
2. How Many vehicles are in the District's Fleet
3. How Does The District Evaluate its Fleet
4. Condition of the Districts Fleet
 1. Top Ten Fleet Users
 2. Condition Charts



What Types of Vehicles are in The Districts Fleet



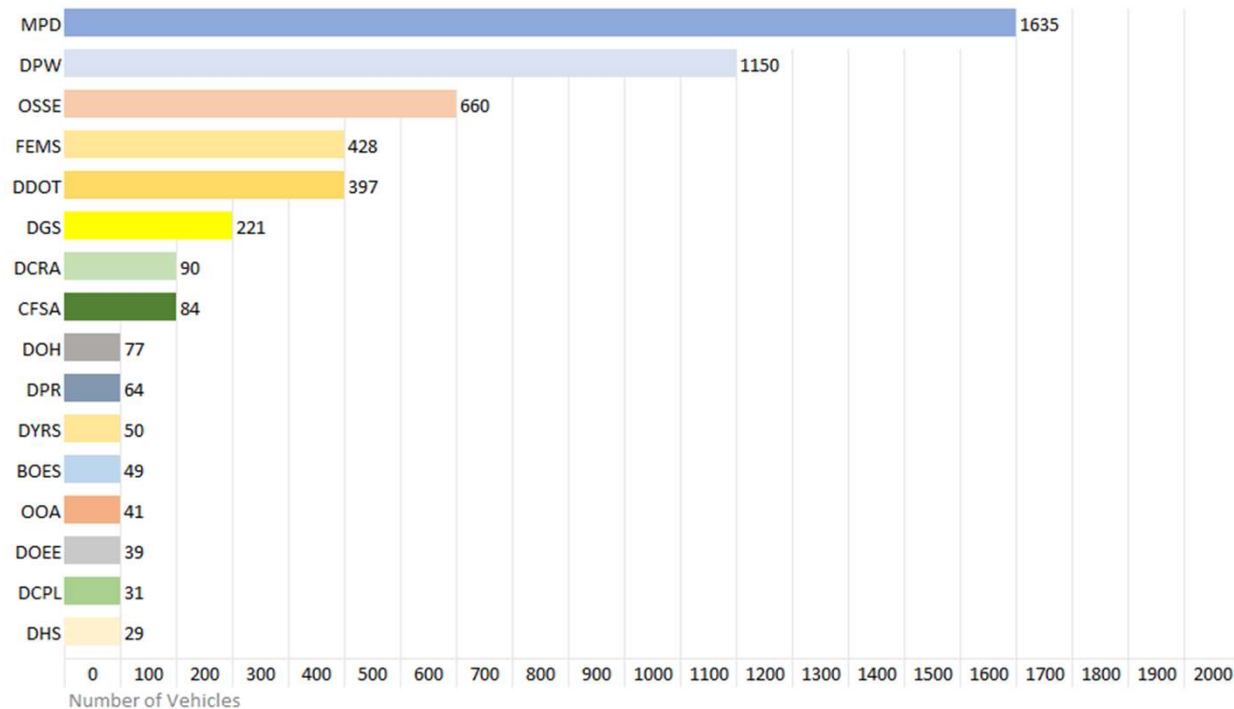
* Vehicle Types of 50 or more are displayed

** Active Vehicles only; non-self-propelled vehicles, trailers, and golf carts are excluded

GOVERNMENT OF THE DISTRICT OF COLUMBIA
CARSS



District's Fleet by Agency



* Vehicle Types of 29 or more are displayed

** Active Vehicles only; non-self-propelled vehicles, trailers, and golf carts are excluded

***DPW Manages the Districts fleet excluding: MPD, OSSE, FEMS, DOC, DCHA

GOVERNMENT OF THE DISTRICT OF COLUMBIA
CARSS



How Does The District Evaluate its Fleet?



Methods for Evaluating Fleet are

- 1 Internal Review Board (IRB)
- 2 Program Staff of: DPW, OSSE, FEMS, DDOT, MPD
- 3 CARSS condition scores; used by the Office of the Chief Financial Officer

CARSS condition scores* measure a vehicles risk / need for replacement on a 20-point scale. Condition scores are determined by three factors:

- 1 Maintenance Cost life-to-date (labor, parts, warranty costs, ect.)
- 2 Life-to-date mileage or engine hours (whichever is greater)
- 3 Expended life in months

Condition Continuum



* Additional Information on CARSS condition scores in the appendix

GOVERNMENT OF THE DISTRICT OF COLUMBIA
CARSS



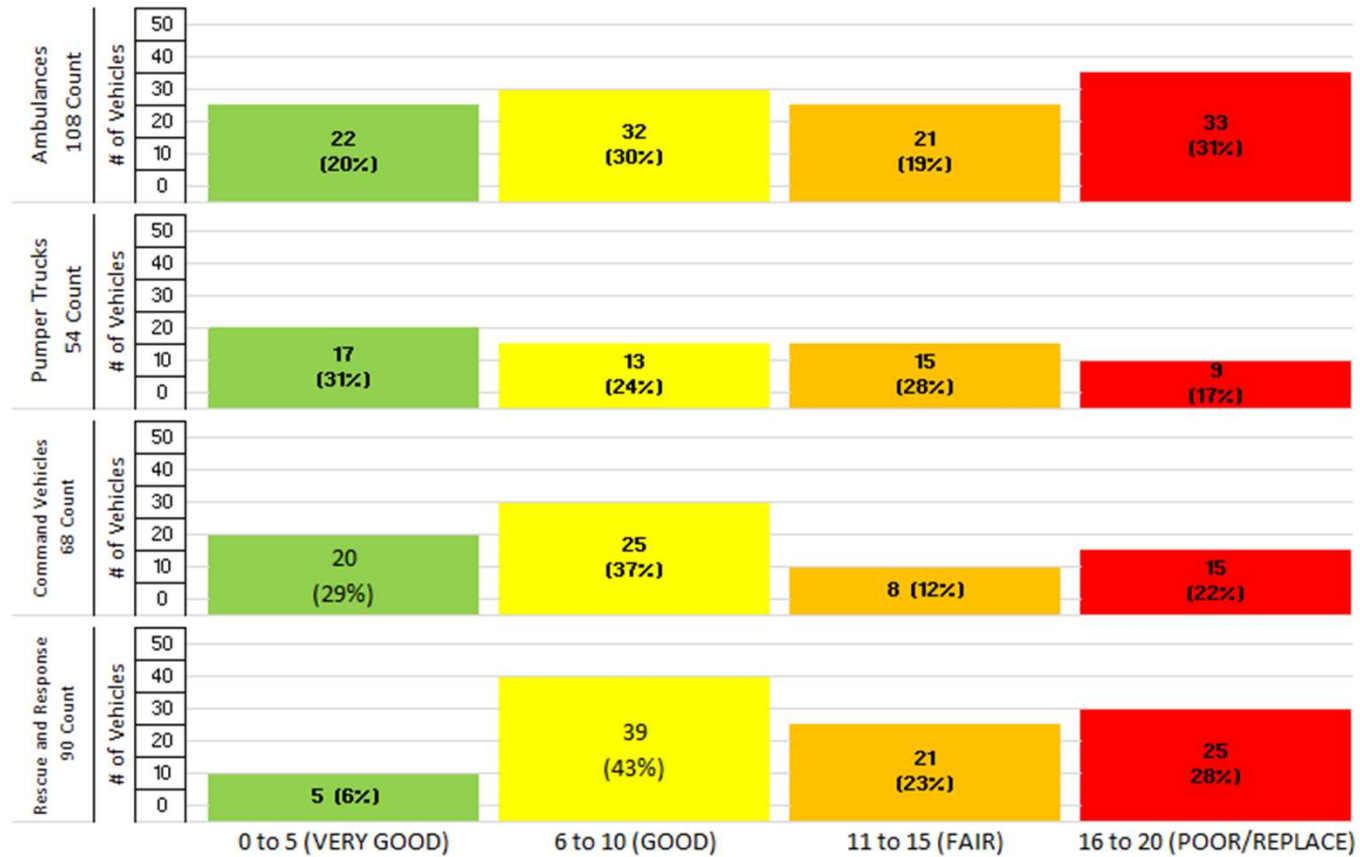
MPD – Marked, Unmarked, Motorcycles, Command Bus



GOVERNMENT OF THE DISTRICT OF COLUMBIA
CARSS



FEMS - Ambulances, Pumper Trucks, Command Vehicles, Rescue and Response



GOVERNMENT OF THE DISTRICT OF COLUMBIA
CARSS



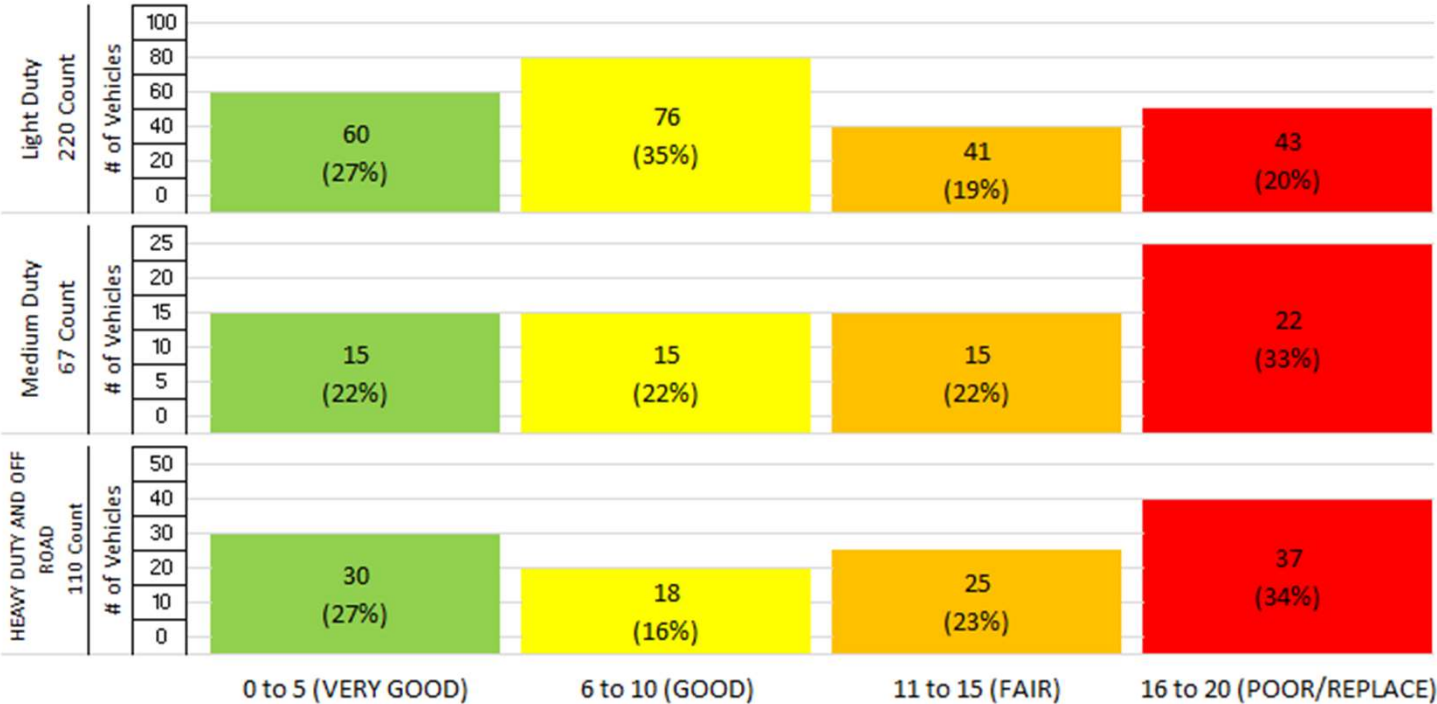
DPW – Light, Medium, Heavy



GOVERNMENT OF THE DISTRICT OF COLUMBIA
CARSS



DDOT – Light, Medium, Heavy



GOVERNMENT OF THE DISTRICT OF COLUMBIA
CARSS



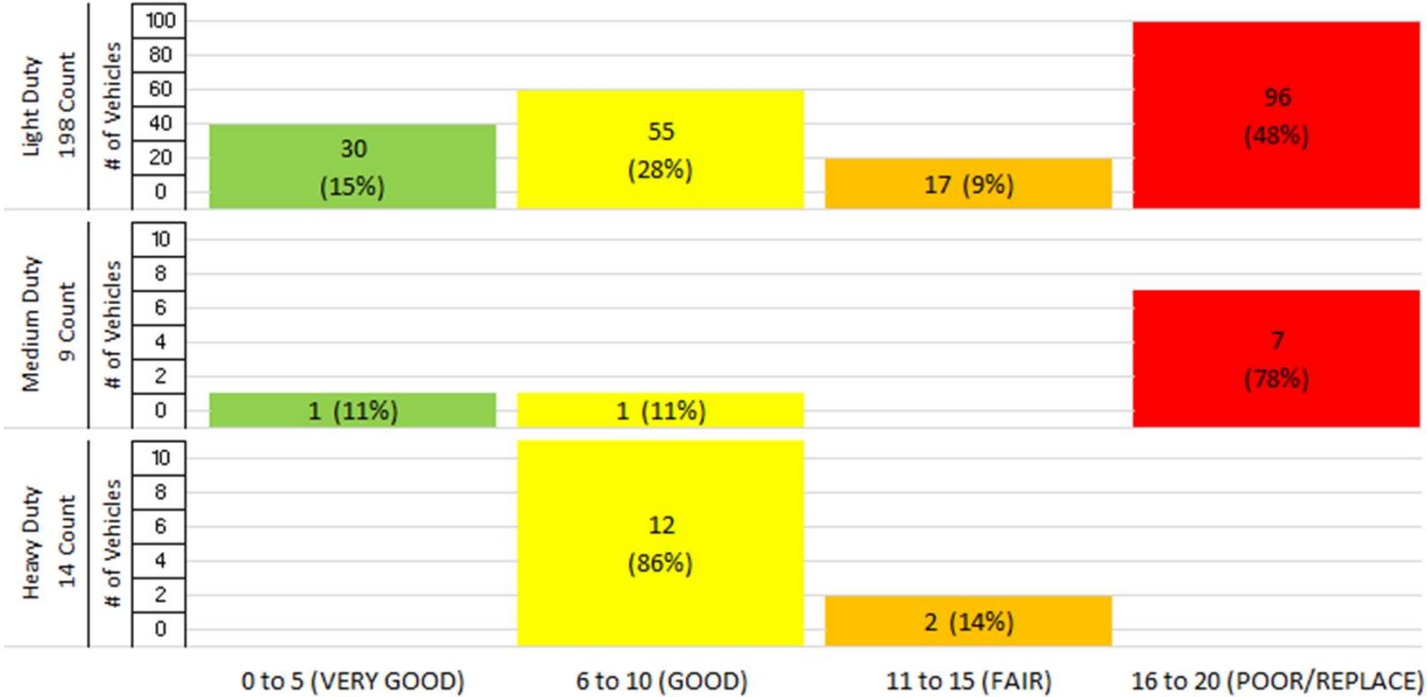
DCRA – Light, Medium, Heavy



GOVERNMENT OF THE DISTRICT OF COLUMBIA
CARSS



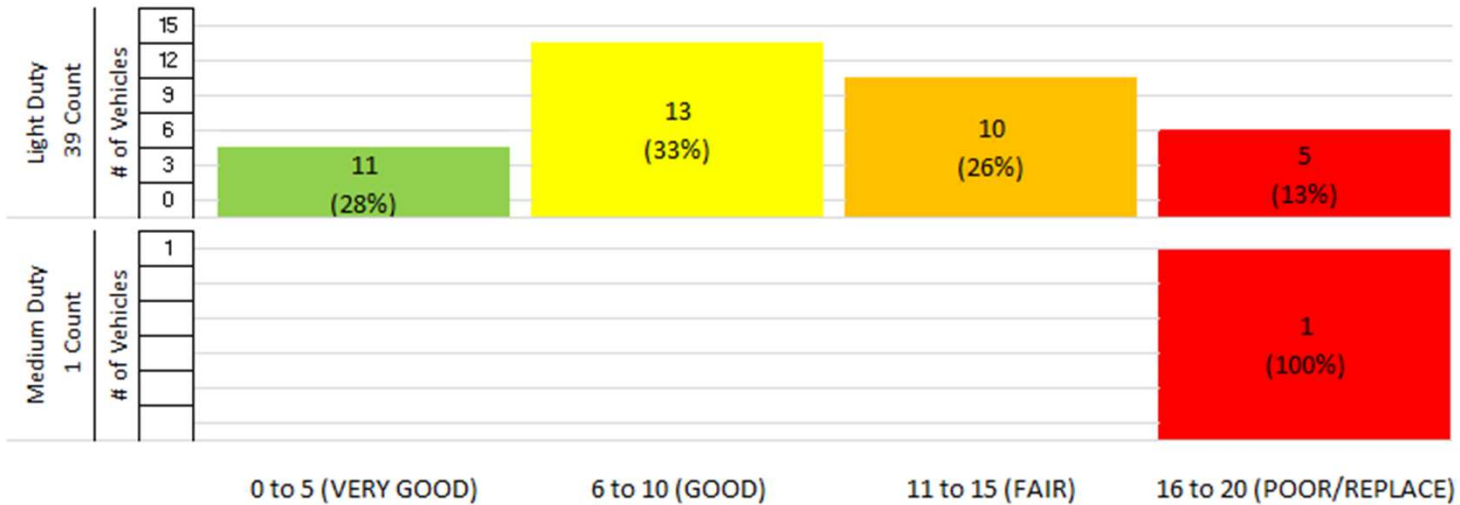
DGS – Light, Medium, Heavy



GOVERNMENT OF THE DISTRICT OF COLUMBIA
CARSS



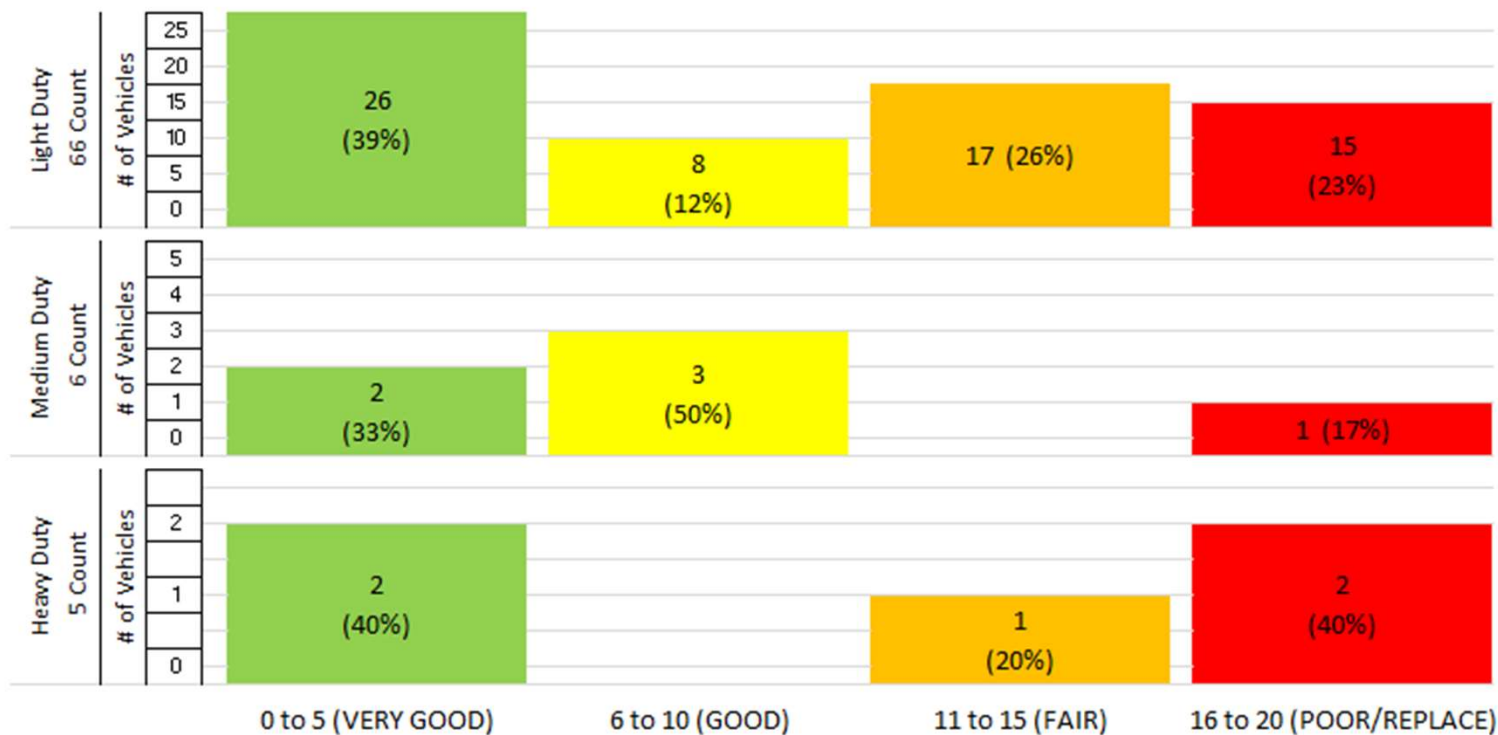
DOEE – Light, Medium (no heavy)



GOVERNMENT OF THE DISTRICT OF COLUMBIA
CARSS



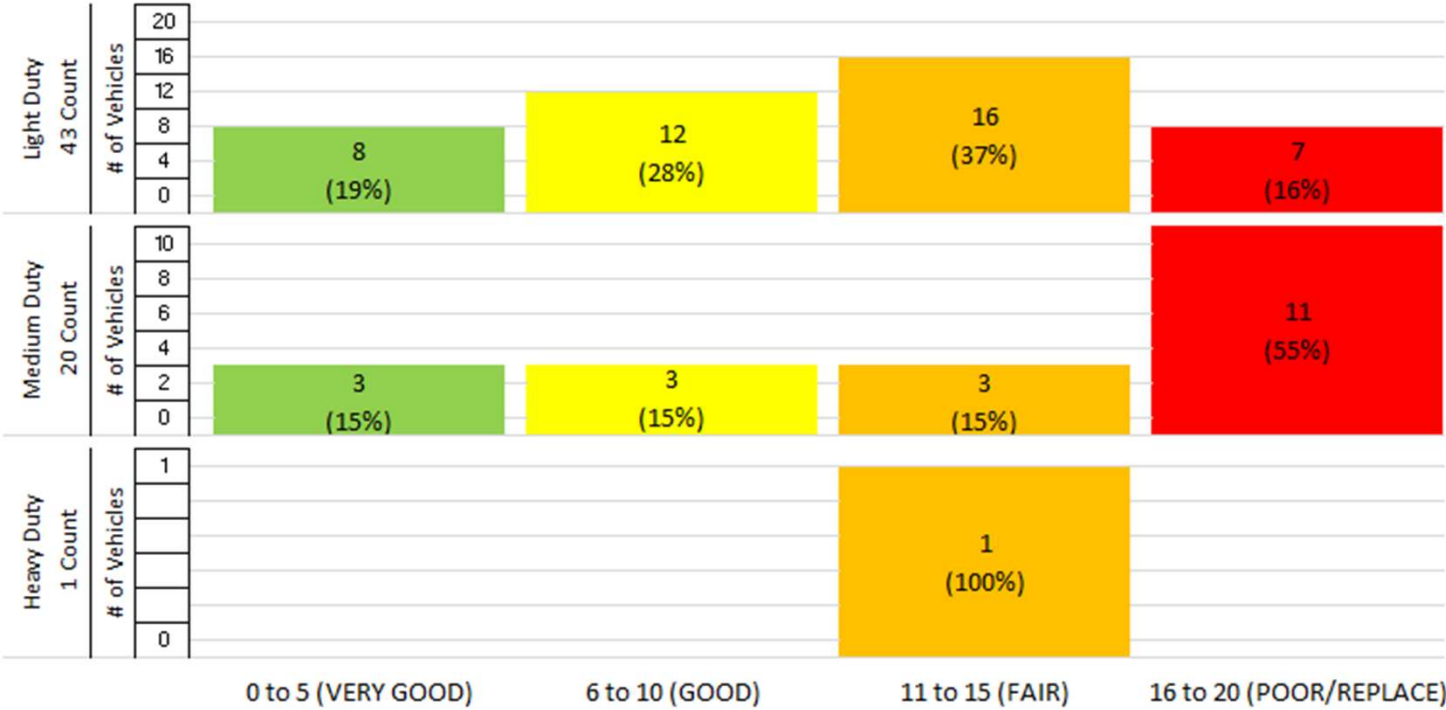
DOH – Light, Medium, Heavy



GOVERNMENT OF THE DISTRICT OF COLUMBIA
CARSS



DPR – Light, Medium, Heavy



GOVERNMENT OF THE DISTRICT OF COLUMBIA
CARSS



DYRS – Light, Medium, Heavy



GOVERNMENT OF THE DISTRICT OF COLUMBIA
CARSS



CFSA – Light Duty (no medium or heavy)

